

Blood from the west country

Blood from an entirely different part of the United Kingdom was introduced into the family through the emigration of two West Country youngsters – William Barton Hill and Mary Ann Draisey.

The earliest Draisey we have is Phillip Drayside who was a witness to a deal for Wotton under Edge land signed at Berkely Castle in the reign of Henry III (1216-72). The right to the local manor was disputed between the families of Lord Berkerley and the Lord Lisle for nearly 200 years. William, Lord Berkerley and Thomas, Lord Lisle finally took to recourse by arms to define the right. On May 20, 1470 both men and their retinue met on Nibley Green (North Nibley) making a congregation of over 1000, perhaps including a Draisey or two.

About 150 fell in combat, amongst them Lord Lisle who opened his visor for a better view and was shot in the mouth with an arrow, which decided the contest. This was the last battle fought on English soil entirely between the private armies of feudal magnates.

The village is of 'considerable antiquity' and was formerly famed for its manufacture of woollen cloth. The village is also famous for producing William Tyndale who translated most of the Bible into English. The village is interesting in that it is a series of interlocked hamlets, rather than a cohesive village.

Nibley is about 16km to the north.

The earliest 'Draisey' is John who died in 1502 in Nibberly, which we assume is now Nibley. John married Alice ??? and the succession was to John b 1545 Tortworth, followed by Christopher, born 1566 Tortworth and Christopher born 1580 whose family of

five is the first we have. His son Christopher married Jane Wimbury of Tortworth in 1641 and had four children. He married secondly Elizabeth Francombe.

Some of the family were doing alright, judging by the 1686 will of William Draysey who left to his eldest son John at the age of 21, provided his mother does not remarry, all of his Tortworth estate and he shall provide for his mother for the rest of natural life. If John does not inherit, the second son William and his heirs will inherit the land with the same proviso for Hester. Regarding cash, William bequeathed £60 to William, £20 to John and £40 to Hester. The best bed, bedsheets and appropriate furniture went to the eldest John, once he became 40; William was left a bed and bedside furniture, pots and pewter on attaining 25 years. The rest of his material and personal possessions were left to Hester.

The £120 in the will was worth £14,380 in 2017 – in 1690 it would have paid the wages of a skilled tradesman for 1333 days.

Modern family

Our modern family group is headed by John Draysey (bapt: 1739) and his second wife Mary Ford, who both originated from Tortworth, and their descendants have spread to the neighbouring villages of Charfield, Thornbury, Falfield and Stone. It was not until the early 1820s that first members moved out of the area to find work in the coal and iron fields of the Forest of Dean. From the Forest, various members of the family moved further afield, all finding employment in coal mining, Derby and Stoke on Trent in 1870s, Glamorgan and Yorkshire in 1880s.

Cousins, Edwin and Maurice went to Acton, London as carpenters, George and Henry with their wives were more adventurous, arriving in Victoria, Australia in 1852, where many of their descendants are still living.

From Tortworth, Matthew Draisey and his wife Hannah Pinnell (Purnell), emigrated to Ontario, Canada in 1871

North Nibley – site of the last battle between private armies on British soil.



with their seven children. A few of the family stayed in Canada, while others moved south to South Dakota and Iowa in USA.

From the 1881 census for England, Scotland and Wales, the total number of Draiseys (with various spelling) was 193.

And Mary Ann from Ruspidge undertook the big adventure of several months aboard ship sailing to a new life in New Zealand.

Domesday origins

Tortworth is an old village dating back to before the Domesday Book where it is described as having 19 households in the Hundred of Bagstone. The tax estimation was very small, at one geld unit. The value to its lord (Awold the Bald) in 1066 was £7 and strangely that had reduced substantially to £5 two decades later. There were six villagers, seven smallholders and six slaves in Tortworth, and there was also 10 acres of meadow, 0.5 leagues of woodland, and three mills worth 0.75 of a geld unit.

The ploughland consisted of two lord's plough teams and seven men's plough teams. At census, Tortworth had 147 inhabitants.

Eight centuries later and 1861 is the first census Mary Ann was included in. She was born in Ruspidge, a hamlet outside East Dean (the eastern edge of the Forest of Dean now known as south of Cinderford or Littledean) in 1853 to Thomas Draisey (born Wickwar 1819) and his first wife Ann Webb, born East Dean – who had been wed at Flaxley on 13/4/1844.

Thomas was a coal miner, as were his 15-year-old son George and 13-year-old son Thomas (both born Staffordshire). Also in the household was Ann's widowed mother Emma Webb (born 1784), James aged 10 and Sarah J, born in Monmouthshire.

The notes to the 1861 census state the Draisey house had a furnace. Coal and iron ore from shallow desposits had been mined in the area from before Roman times and the area was different to the rest of the country in that it had free mining rights for the locals – it may be that the Draisey's had a small coking furnace attached to their residence.

Ruspidge

Ruspidge (earlier known as Ruspidge Meend) was a collection of scattered cottages south of Cinderford Brook. Building presumably started in the 19th century



The old Sweet Chestnut opposite St Leonards in Tortworth is one of the oldest in the UK – it was notable even in the time of Stephen.

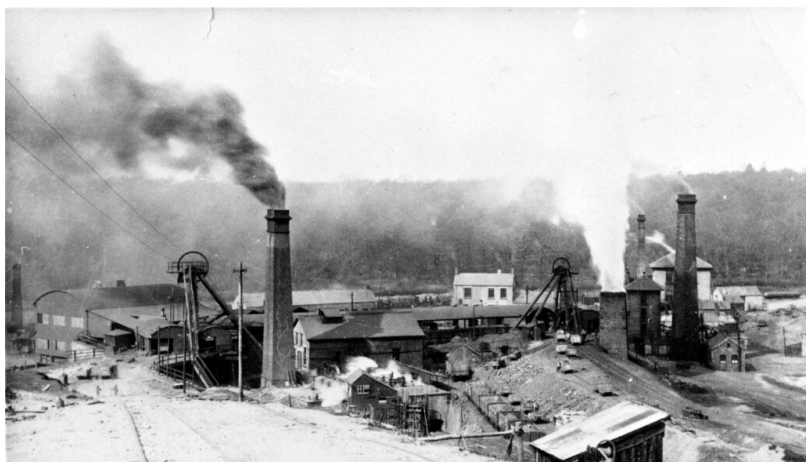
when the Abbots wood estate encompassed that land and there were 45 inhabited cottages to the south of Cinderford bridge in 1841, so the Draiseys (as newcomers to the area) may have had to settle for the lesser 'suburbs'.

The Crawshay family provided other dwellings including the circa 1864 Forest Lodge and Abbotswood, the principal house in Ruspidge stood in grounds higher up to the east dated from a rebuilding in the 1840. It was built for the Crayshaws – Henry lived there in 1851 with his son Edwin until the late 1870s. A chapel was added and it became a Anglican temperance home in 1907. It was remodelled later for the Crayshaws' partner A.J. Morgan. It was a convent and a nursing home before being demolished in 1992.

Public housing came spasmodically to Ruspidge and the occasional commercial subdivision. Today it has two pubs opposite each other, a village shop, a park, football pitch, a chapel and a disused railway station.

The Brains

Two Draiseys married Jane and Sarah Brain in the 1840s. The Brain family were known as innovators in the coal industry and owned the Trafalgar mine and other assets in the area. The Trafalgar gallery was granted to Corneleus Brain in 1842, but work does not appear to have begun until about 1860. The colliery was unique in Dean in being lit by gas, and electric pumps were



Lightmoor colliery near Ruspidge



Ruspidge, Cinderford etc



Tortworth area 1946

installed underground in 1882, the first recorded use of electric power in a mine.

Trafalgar was one of the larger pits, employing 800 men and boys in 1870, and producing 88794 tons of coal in 1880 and about 500 tons/day in 1906. However, the main dip roadway was unexpectedly flooded in 1919, and the colliery was bought by the managements of Lightmoor and Foxes Bridge Collieries to protect their own workings. It closed in 1925. Nearby Trafalgar House (still a dwelling) was the home of Sir Francis Brain, who was knighted for his 45 years' work in the industry including President of Mining Association; member of Institute of Mining Engineers and past President of Colliery Managers' Association.

Wickwar

Thomas Draisey was born at Wickwar but no doubt moved west for the mining. Wickwar is also noted in the Domesday Book and originated in Saxon times with Roman ruins in the area. The Book lists the settlement as containing 30 families and was worth £12 – prosperous for the time. John de la Ware had been granted the manor in 1185 and obtained a charter for market from Edward 1, creating a new planned settlement based on the High St and the church was now on the fringe of the town, instead of the centre. The earlier village disappeared while the de la Ware family was busy helping create Delaware and Virginia.

The village contains 67 listed buildings, some dating back to the 15th century, but modernisation of the frontage gives the town an 18th century look. The town clock which strikes in the turrett hourly is said to be the oldest town clock in Britain. The present church of Holy Trinity dates from the 1300s.

In the 19th century Wickwar had a reputation for drunkenness with at least nine public houses in the small town, and it still boasts a local ale brewery and had a cider factory well into the 20th century. The Arnold Perret Brewery used electric power from a hydro generator and the excess was used to make Wickwar one of the first in England to have electric light. The Dulcie family took over the manor from the de la Wares in the 17th century, but the present earl (an Australian) lives locally and more modestly.

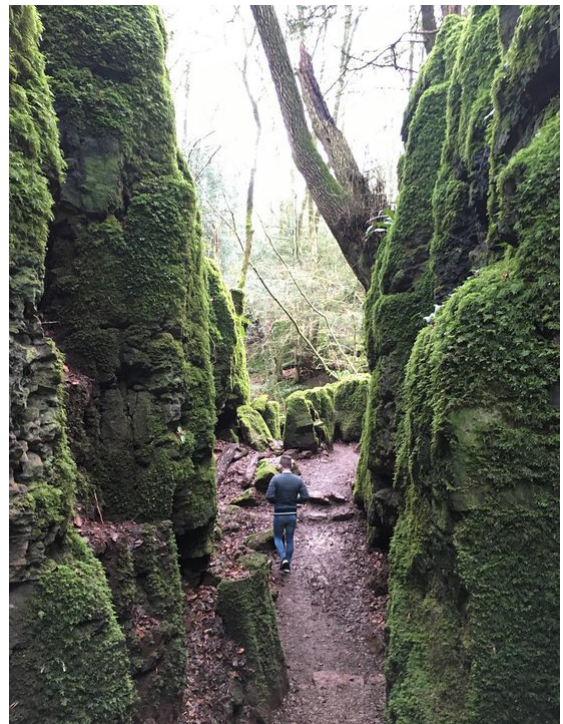
Forest of Dean

Cinderford, Littledean and Ruspidge come close to being one town these days and Littledean's claim to fame is Littledean Hall, reputedly one of England's most haunted houses and thought to be the oldest house in the UK which is still occupied. Celtic and Saxon remains have been found in the cellars. Part of the house



Above: **Wickwar High St 1918**

Below: **Forest of Dean**



is designated as a breeding ground for the greater horseshoe bat.

The main industry in the area became the coal mines and the Cinderford ironworks they supplied. The Romans and Normans had already used the area for iron-making as it also had a ready supply of wood. 'Modern' iron-making began in 1795 and its fortunes roller-coasted until it closed finally in 1894. Today it is the main commercial centre of the Forest of Dean.

Ruspidge Meende is in effect now a suburb of Cinderford. The term meend roughly means a clearing in the forest and this is usually attributed to it being a ridgeline or inferior land the trees don't grow on. Ruspidge is hemmed in on three sides by the Forest of Dean and the three-village complex is the highest inhabited point in the forest.



Forest of Dean

A few Draiseys found themselves on the wrong side of the law: these records provide a lot of personal information. For example, Wiliam Draisey from Tortworth found himself before the magistrate on 1/7/1833, pleading not guilty with Thomas Peglar to receiving four spades, two hatchet heads from potato hackers and a hoe, to the value of 20 shillings. The pair were discharged but it seems they spent three days in jail while waiting for proceedings to be finalised.

William is described as having black hair, dark complexion, gey eyes, 5' 6 1/2" tall and could read and write. There is a list of scars which are probably the result of his labourer's work, and a list of moles on various pats of his body.

Jane Draisey of Wooten-under-Edge was sentenced to 14 days' hard labour for stealing meat. She was 4' 9 1/2" tall with black hair and was a Dissenter.

John Draisey, 18, of Little Dean was charged with wilfully damaging a pear tree. The penalty on offer was either a fine of five shillings or 14 days' hard labour. The outcome of the case is not known. John was 4' 10", curly brown hairr, grey eyes and fresh complexion.



The Triangle, Cinderford



Slab quarry – Ruspidge

In the 1841 census for Gloucestershire

At Falfield

Rebecca 78

James 58 cordwainer (shoemaker)

Frances 56

Martha 25

and sawyer William Williams and two of his children

Daniel 35 ag lab

Hannah 40

James 10, Margaret 6, Morris 5, Edwin 3

Ann 30

June 30

Ann 5

George 3

Henry 30 ag lab

Elizabeth 20

At Pucklechurch

Sarah 17 farm servant living with John Nelms at Holbrook, farmer of 40 acres

At Gloucester city

James 59 cordwainer at St Mary's Sq, Gloucester

Frances 56

Martha 28, Emily 15 and a family of five Whites

At Gumbalds Ash (Little Sodbury)

John 45 ag lab

Eleanor 40

John 13, William 10, Henry 6, Lewen 3

William 39 ag lab

(wife) 30

William 11, James 9, Ann 8, Emma 5, Rebecca 3, Harriet 1

At Little Sodbury

John 45 at Winchcomb Farm

Eleanor 40

John 13

William 10

Henry 6

Lewin 3

Ann Draisey 15 living with the Barton family on Winchcomb farm

At Rockhampton

Thomas 40 born Thornbury

Martha 35 b Thornbury

Henry Kednall 1 b Thornbury

At St Mary De Lode (Gloucester)

James 58, Frances, 56, Eliza 30, Martha 25, Emily 15, Frances 12, George 8, Margaret 4, Clara 1

St John the Baptist

George 20, Louisa 20, George 4, living with the Jew family in Sherbourne St

The 1851 Gloucestershire distribution of Draiseys

Charfield

Matthew b Tortworth 35 ag lab

Hannah b Tytherington 30

George 7 scholar

Jane 4 b Charfield

William 2 b Charfield

James lodger 20 b Cromhall stone mason living with James Dunn family

Eliza 15 b Thornbury ag lab with James Robinson on 80 acres at Charfield

Ann 1826 Thornbury wife of Henry of Sunday Hill

Hannah widow grocer Tortworth

John widower 32 Tortworth ag lab

Jane 21 Tortworth laundress

Ann 2 Tortworth

Henry 37 Thornbury sawyer

Ann 25 Thornbury

Sarah 9 Falfield scholar



Little Sodbury countryside.

Photo: Derek Harper

Daniel 48 Thornbury ag lab
May 16 Thornbury
James 50 Falfield
Sussanah 61 Yate

George 35 Tortworth living with John Hillman b
Wickwar.

In the 1861 census

At Thornbury

Daniel 58 labourer born Falfield
Hannah 48 born Cam

At Wootten under Edge

Elizabeth servant on Bassett Court Farm with the Lee
family 13 b Cromhall

In the 1891 census:

At Avening Green

Mark 70 ag lab born Tortworth
Sarah 58 dressmaker born Charfield
Eliza 26 born Tortworth
Alice 18 dressmaker born Tortworth

Llangyfelach

15 Landeg St
Frederick 31 plate layer b Tortworth
Emma Jane wife 26
Elizabeth Ann 3 b Landore, Swansea
Frederick 1 b Landore, Swansea

Stoke on Trent

Samuel 39 stone miner b Littledean Hill
Sarah A 39 wife b Salt
Margaret E 17 potter's assistant b Hanley
William 15 potter's assistant b Hanley
Rhoda 13 scholar b Hanley
George 9 scholar b Fenton
Thomas 7 scholar b Fenton
Eliza A 5 scholar b Fenton
Albert 3 b Fenton

***The haunted Ancient Ram hotel in Wootten under
Edge.***



Winchcombe farm.

Mary J 10m b Fenton
In the 1841 census for Gloucestershire;

Falfield

Rebecca 78
James 58 cordwainer (shoemaker)
Frances 56
Martha 25
and sawyer William Williams and two of his children

Daniel 35 ag lab
Hanah 40
James 10, Margaret 6, Morris 5, Edwin 3

Ann 30
June 30
Ann 5
George 3
Henry 30 ag lab
Elizabeth 20

Pucklechurch

Sarah 17 farm servant living with John Nelms at
Holbrook, farmer of 40 acres

Gloucester city

James 59 cordwainer at St Mary's Sq, Gloucester
Frances 56
Martha 28, Emily 15 and a family of five Whites

Gumbalds Ash (Little Sodbury)

John 45 ag lab
Eleanor 40
John 13, William 10, Henry 6, Lewen 3

William 39 ag lab
(wife) 30
William 11, James 9, Ann 8, Emma 5, Rebecca 3, Harriet
1



Little Sodbury

John 45 at Winchcomb Farm
Eleanor 40
John 13
William 10
Henry 6
Lewin 3

Ann Draisey 15 living with the Barton family on Winchcomb farm

Rockhampton

Thomas 40 born Thornbury
Martha 35 b Thornbury
Henry Kednall 1 b Thornbury

St Mary De Lode (Gloucester)

James 58, Frances, 56, Eliza 30, Martha 25, Emily 15, Frances 12, George 8, Margaret 4, Clara 1

St John the Baptist

George 20, Louisa 20, George 4, living with the Jew family in Sherbourne St

1891 census

At Avening Green

Mark Draisey labourer b Tortworth 70
Sarah b Charfield dressmaker 58
Eliza b Tortowth 1865
Alice dressmaker 19
Joseph 15

At Little Dean

Eliza b 1836 Tibberton, now Slimbridge, Littldean

Jane, 65, b Little Dean, was visiting relatives in Stoke on Trent

At Cinderford

Charlotte 65 b Bristol widow Woodside Rd.
Two boarders

1901 census

At Little Dean

Wiliam 56 b Little Dean coal-miner
Eliza 62 b Little Dean
James Morgan 62 lodger carter

By the time of the 1921 census, all the Draiseys from the Tortworth and Forest of Dean areas had gravitated to Cheltenham or Gloucester city or elsewhere in the world.



Littledean Hall– reputedly one of the most haunted houses in Europe. It is also one of the longest continuously-occupied sites as excavation in the cellar has discovered archaeology back through the various ages to Saxon times.



Ring fort near Little Sodbury.

Photo: Ray Hill

Below: the area around Pucklechurch.



There are two options on the 'origins' of our Draisey family.

A

Reginald Drayside (b about 1540 based on 20 years per generation).

|
Nicholas Draysey

|
Richard Drayside

|
Thomas

|
John

|
William

|
John

|
Crystoffer

|

=====

B

John

abt 1524
Nibberley
m

Alice

abt 1523
Nibberley

|

John

1545 Tortworth
m ?

of Tortworth
abt 1544

|

Christopher

1566
Tortworth

|

Christopher

b 1580

|

Christopher

b 1607
Tortworth
1681



Tortworth Court – the home of the de Vere family (Earls of Ducie). Now a up-market hotel, it is the centre of a large working estate.

Daniel

1610

Elizabeth

1616

John/Joan Thomas

Looking across the Draisley homeland toward the Cotswold escarpment.

Tortworth
|
m (2)12/4/1762 Tortworth
Mary Ford
b abt 1742
Tortworth

|

William b 1765 Tortworth 20/12/1847 Woodford m (1) 25/12/1793 Stitchcombe Sarah Lord (see later)	John c 17/12/65 Tortworth m (1) Nancy Hale (see below) m (2) 20/5/1796 Rebecca Carpenter 4/9/1774 North Nibley 13/5/1844 Falfield 	Hannah 30/10/67 (all Tortworth)	Eliza 10/1/7 (all Tortworth)	Mary 19/4//75 22/1/76	Mary 17/11/76
Hester 12/12/79 James 27/4/83					



Stooks of hay stacked for collection by horse and cart.

Thomas 1/7/1798 Thornbury 1883 m Martha Stagg 27/2/1803 Thornbury 1868	James bap 4/1/1801 Tortworth 1876 m 1818 Tortworth Susanna Cook 20/4/1788 Yate 1873 East Dean (2)	Daniel 3/11/02 Falfield m m (1) Hannah Harrison Hannah ? (see later)	Hannah 16/12/04 Thornbury William Draisey (see later)
--------------------------------------------------------------------------------------------------------------	--------------------------------------------------------------------------------------------------------------------------------------	--------------------------------------------------------------------------------------------------------------------	-------------------------------------------------------------------------------------

	Ann 17/5/07 Thornbury	Wiliam 19/11/09 Thornbury	Henry 5/7/12 Thornbury m pre 1852	George Eliza 15/1/15 17/10/19 Falfield 19/3/66 Ann Ford Ballarat, Australia (see later)
--	------------------------------------	----------------------------------------	---------------------------------------------------	-------------------------------------------------------------------------------------------------------------------------

East Dean 1955

Thomas 1819 Wickwar 31/3/1887 East Dean m (1)13/4/1844 Flaxley on Severn Ann Webb	William bap 22/1/1825 Falfield 12/8/1890 Westbury	Henry 1830 Falfield m Dinah Perry
-------------------------------------------------------------------------------------------------------------------	----------------------------------------------------------------------	-----------------------------------------------------------------



1821
East Dean

14/8/1831
Littledean

Elizabeth J
1870
Treafof, Wales
1932
m **Charles Townsend**
1870 Cinderford
1949

(2) 17/5/1864 Flaxley
Charlotte Hill (Buck)
1824
1894 East Dean

Mary Ann
22/8/1853
Ruspidge
24/6/1933
Hastings, NZ
m (1) 7/12/1879
Meeanee, Napier
William Barton Hill
1848
St Augustine the less
Bristol
emigrated to New Zealand

Daniel
21/7/1822
Falfield
1/12/1890
Little Dean
m 1/10/1842
St Ethelbert, Little Dean

Sarah Brain
12/3/1820
Little Dean
1880
Stoke on Trent

William
11/12/1824
Falfield
30/7/1890

m 6/1/1845
Llannennarth

Jane Brain
13/5/1825
Little Dean
29/8/1896
Burnley district
(see below)

(2) 25/4/1900
Registry, Hastings
Cornelius
Horan
b 1876-7
NSW

Alfred

b 1881

**George
Charlie**

1884
m
Hilda
opherson
|
William
Barton
1852

Ruby Violet

27/7/1886
(to Snedden
and Lopdell
families)

Kate
Winifred
Sarah
1890
m
Edward John
Simmons
abt 1924

Barton

Lyda

Rex

William
1844
Littledean
1901
Montpelier,
Ohio
m
Eliza Woolford
Tibberton

Samuel
1852
Gloucester

m
Sarah Ann
Yates
Bank House
Staffs.

Jane
1855
Gloucester

m
**William
Perry**
b 1875
Gloucester



**Mary Ann Hill (nee Draisey)
with daughters Kate and
Ruby, and grandson Barton.**

Cyrus

1852 (8)

Littledean

m 1st cousin

Annie Draisey

30/1/1861

Forest of Dean

17/11/1919

1852

Eliza A

1886

Staffs.

m

Alfred J Lilley

1887

Stoke on Trent

Daniel (Daniel and Sarah)

m

Sarah Payne

28/3/1669

North Nibley

William (John and Mary Ford)

13/3/1763

Tortworth

20/12/1847

Woodford

m (1)

Sarah Lord

d 30/3/Tortworth

|

Mary

22/3/1794

Brayham,

Tortworth

Hannah

29/4/98

Marshfield

m 24/10/1822

William

William

12/12/1802

Stone

Jan 1879

Thornbury

Park

m (1) 1826

Eunice

Ford

(2) **Hannah**

Draisey

16/12/04

Thornbury

(see laterr)

Sarah

30/6/1804 ?

Bersasalley

9/11/1867

Thornbury hospital/

workhouse

(former house servant)

m (2) 17/10/1814

Charfield

Hannah Peglar

abt 1786

Tortworth

|

|

|

Matthew

6/5/1815

Tortworth

13/7/1876

Aldbrough,

Ontario

m 8/8/1840

Hannah Pinnell

1821

Tytherington

Luke & Mark

20/10/16

Tortworth

31/7/17

Tortworth

John

26/2/18

Tortworth

Mark

25/3/20

Tortworth

Maria

25/5/24

Tortworth

25/4/1906

Jane

James



Thornbury



Thornbury Park farm

1830
Tortworth
2/12/31
Tortworth
d 1886
m 9/10/1853
Harriet Cotton
of Whitechapel
b14/8/1838
Besford, Worc.
1890
|

Mary Ann
b 42 Union St
Cheltenham
12/1/1854

Ellen Rosina
5/7/1857
Cheltenham

Georgina
1860
Cheltenham

Lily
1864
Cheltenham

m **George Swan**
7/12/1880



Little Sodbury manor

====

John
m
Nancy
2/4/1773
Stone
24/6/1795

Francis
25/2/1795
Stone

29/3/95
Stone

John
2/3/1853 or 3/2/1853
Little Sodbury
agricultural labourer
m 20/5/1822 Little Sodbury
Eleanor Harrison
1799 Little Sodbury
13/7/1869 of decay of nature
|



Ann
30/1/1823
Horton
farm servant
m 15/12/46
Thomas Deacon

John
27/4/28
Horton
Sept 65

William
6/2/31
Horton
at Hall End
Farm, Yate
1851, ag lab
for Charles Issac

Henry
6/1/33
Horton

Henry
5/7/35
Horton
26/1/73

Horton

Lewin
22/4/38
Horton
13/2/1904
R.U.H Bath

Elizabeth
1843
Little Sodbury
ag lab
d Kingswood

=====

Daniel

buried Iron Acton old cemetery. Lived Sundays Hill, Tything, Falfield.
m

Hannah Harrison

1798
12/2/1850
|

James	Mary	Mary	Maurice	Edwin	Jane
26/10/1830	11/11/32	Harrison	22/5/36	2/12/38	1842
Falfield	Falfield	9/11/34	Falfield	Falfield	Falfield
26/7/96	1915	1893	1913		

=====

William

12/12/1802
Stone
1878
m (1) 25/12/1826 Bristol

Eunice Ford

1809
Avening
|



*Huntsman's Inn, Falfield,
parts of which date back
to the 17th century.*

Rebecca	Harriett	Hannah	Mary	Ellen	John
1838	1840	July 1841	1843	Cecilia	Aug 1846
Tortworth		Thornbury		Jan 44	Cromhall
April 1844		Park		Thornbury	March 1932
Thornbury		Dec 1904		Park	Cheltenham
Park		Thornbury		1870	m
		Park		Thornbury	Mary
		m		Park	Louisa
		James			Wall
		Hawker			1858
		21/7/1835			Charlton Kings
		Coates			April 1901
		Dec 1920			Cheltenham
		Thornbury			(see later)

Elizabeth	Sarah	Jane	Anne
1847	8/12/49	1850	1855
	Cromhall	Cromhall	
	1880	1853	
	Thornbury	Thornbury	
	Park	Park	

m (2)
Hannah Draisey (cousin)
16/12/1804
Thornbury
|

Henry	William	Rebecca	Harriett
23/12/1827	1830	1838	1840
Thornbury			
Park			
Jan 1839	Hannah	Mary	
Tortworth	1842	1843	

Leafy Cheltenham centre



March 1935
Salisbury
m
**Hilda
Jane
King**
Sept 1885
Chicksaw, Iowa
19/2/1951
Yolo, Caifornia

16/4/1963
Southampton
m
**George
Bethule
Hackett**
25/9/1884

====
George

m?
|

Lilla
1860 Ballarat
1936 Ballarat
m
**Henry Morris
Davis**
1854
Melbourne
21/1/1916
Footscray,
Melbourne
|
Edwin William
m **Annie Elizabeth Wynn**
b 17/3/1869 Falfield,
died Dec 1959 Bentford, M/sex.
She died June 1954 in Osterley.

Eliza
1858
Ballarat
1935
Footscray

Edgar

**George
Herbert**
1865
Ballarat
bur 23/7/1937
Springvale
m
Sarah Grimmett
1866
Ballarat

Winifred Lydia Kiteley
22/12/1903,
Mile End, Tower Hamlets,
died 19/6/2005 Stifford, Essex,
m **Frederick Maurice Draisey**
2/9/1902, Essex – 27/9/1959 Orsett, Essex.
Father Herbert George Kiteley
b 20/11/1865 Bethnall Green,
d Sept 1956 Orsett.
Mother Sarah Anna Cutmore,
b Mile End.

Charfield





